

Department of Emergency Medicine

Network Highlights

Successful 2025 EM Network Retreat Strengthens Clinical Excellence and Connection

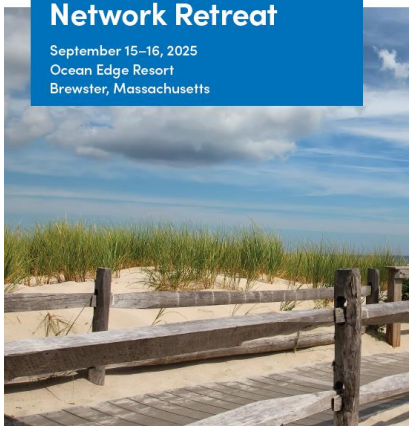


Harvard Medical Faculty Physicians
at BIDMC







HMFP-APHMFP Emergency Medicine Network Retreat

September 15–16, 2025
Ocean Edge Resort
Brewster, Massachusetts



[HMFPEmergency.org](https://hmfpemergency.org)

Education. Team building. N

| Faculty | |
|--|--|
| Course Directors | |
|  Carlo Resen, MD Executive Vice Chair, Department of Emergency Medicine, Beth Israel Deaconess Medical Center (BIDMC), Associate Professor of Emergency Medicine, Harvard Medical School |  Carrie Tibbles, MD Director, Graduate Medical Education, BIDMC, Assistant Professor of Emergency Medicine, Harvard Medical School, Vice Chair of Education, Department of Emergency Medicine, BIDMC |
| Speakers | |
|  Kevin Ban, MD Former Global Chief Medical Officer, Wolgreens Boots Alliance |  Matthew Bivins, MD Attending Physician, BIDMC, Attending Physician, St. Luke's Hospital, EMS Medical Director, St. Luke's Hospital Clinical Instructor, Harvard Medical School |
|  Katherine Boyle, MD Director, Global Patient Safety & Risk Management, Aetna |  Laura Burke, MD Associate Professor, Emergency Medicine, Harvard Medical School; Attending Physician, Emergency Medicine, BIDMC |
|  Henry J. Graziosi, MD BIDMC-Brookline Transitional Residency Program Director, Director of Medical Education, Signature Healthcare |  Neil Hadfield, MD Attending Emergency Physician, St. Luke's Hospital |
|  Adrian Helimovich, MD, PhD Director of Geriatric Emergency Medicine, BIDMC |  Beatrice Hoffmann, MD Division Director, Emergency Ultrasound, BIDMC |
| Join us! September 15–16, 2025 Reserve your spot at the conference today by visiting hmfpemergency.org/retreat25 | |

The 2025 HMFP/APHMFP Emergency Medicine Network Retreat at Ocean Edge was a highly successful gathering that brought together faculty and clinicians from across the emergency medicine network for focused education, skills development, and shared best practices. The program featured hands-on POCUS workshops, expert-led clinical sessions, and structured opportunities for cross-site collaboration. In addition to the academic program, participants benefited from dedicated time for connection and social engagement, strengthening relationships across the network and reinforcing our shared commitment to excellence in patient care.

Beth Israel Deaconess
Medical Center



HARVARD MEDICAL SCHOOL
TEACHING HOSPITAL

Department of Emergency Medicine

Network Highlights

Climate Preparedness Heat Emergency Simulation

During Harvard Climate Action Week this September, **Dr. Tess Wiskel** and **Dr. Satchit Balsari**, in collaboration with post-doctoral fellow and thermal physiologist **Dr. Rob Meade**, co-developed and led a national **Heat Emergency Simulation** focused on climate resilience and public health response.

The program convened **37 city officials from seven cities across the country** for an immersive, multimedia exercise modeled on recent heat waves in Phoenix



Participants were asked to navigate cascading crises driven by extreme heat — including infrastructure strain, health system burden, and community vulnerability — and worked collaboratively to develop response strategies and share best practices.

This simulation highlights the increasing urgency of municipal climate preparedness and the critical role of public health leadership in shaping effective adaptation efforts.



[Watch the simulation here.](#)



[Read the feature in Bloomberg here.](#)

Department of Emergency Medicine

Network Highlights

BIDMC Disaster Medicine Team Featured in ACEP Now for Boston Marathon Trauma Preparedness



BIDMC's Disaster Medicine Fellowship was recently highlighted in **ACEP Now** for leading a new trauma first-aid initiative at the **2025 Boston Marathon**. The project — led by **Dr. Gregory Ciottone**, **Dr. Jarone Lee**, and Disaster Medicine Fellows **Dr. Josh Glowinsky** and **Dr. Natasha Buzby** — introduced trauma-first-aid kits and standardized bleeding-control training at medical stations throughout the course.

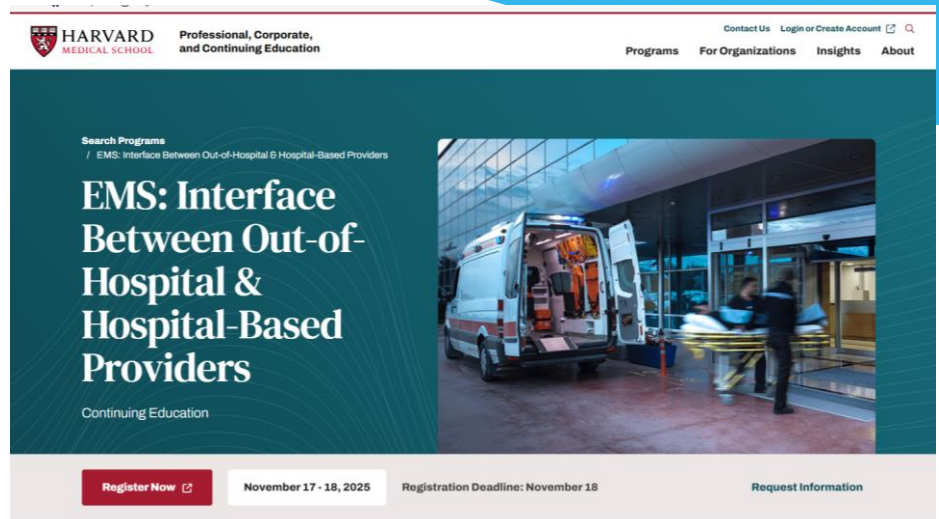
The initiative, funded by a Boston Athletic Association research grant, strengthens rapid response capacity for large-scale public events and will inform national guidance on mass-gathering medicine. Read more [here](#).

Department of Emergency Medicine

EMS Spotlight

EMS Leadership through Education

BIDMC faculty are featured prominently in the upcoming **Harvard Medical School course, “EMS: The Interface Between Out-of-Hospital & Hospital-Based Providers.”** The course brings together experts from BIDMC and Boston Children’s Hospital to strengthen collaboration across the emergency care continuum.



More information is available here: <https://learn.hms.harvard.edu/programs/ems-interface-between-out-hospital-hospital-based-providers>

Alumni are eligible for a discounted registration rate.

EMS Leadership through Research



Six abstracts from our residents were recently accepted for presentation at the **National Association of EMS Physicians (NAEMSP)** Conference in Tampa, January 2026. These projects are being presented by six different residents and supervised by three of our EMS faculty — an exciting reflection of the growing research footprint and national visibility of our program.

Department of Emergency Medicine

Education Highlights

Fall 2025 Virtual CME Courses in Emergency Medicine

This fall, several HMFP and LSP emergency medicine faculty are featured as course directors and instructors in Harvard Medical School's virtual CME courses, which draw participants from over 30 countries, highlighting the department's continued leadership in emergency medicine education on a global scale.

Course Directors include:

- **5th Annual [Advanced Trauma Management](#)** – Sept 22-23
Dr. Carlo Rosen and, a wonderful new addition, Dr. Jake Hoyne. ***This course was a great success with 75 learners from 20 countries!***
- **5th Annual [Neurological Emergencies](#)**
Dr. Jonathan Edlow – Oct 22-24
- **2nd Annual [EMS: Interface Between Out-of-Hospital & Hospital-Based Providers](#)**
Dr. Christie Fritz and Dr. Steve Thomas – Nov 17-18

Network clinicians who would like to attend the Neuro Emergencies or EMS course, either for:

- CME credits (HMS charge \$150)
- learning purposes only (no CME) – free access

Contact [Meaghan Cussen](#)

Beth Israel Deaconess
Medical Center



HARVARD MEDICAL SCHOOL
TEACHING HOSPITAL



In collaboration with the National Medical Education & Training Centre, this course has been accredited by the Commission on Accreditation for Postgraduate Education (CAPCE) for 17 CME.

Virtual: 17-18 November, 2025

Join In-Hospital and Pre-Hospital Clinicians from 20+ countries!

Topics Include

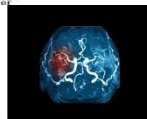
- EMS system design and systems of care
- EMS certification, scope of practice, and limitations of different provider levels
- Protocols and on-line medical control with basic federal and regional rules and regulations
- Provider awareness of their responsibility and liability for medical control
- Interfacility transportation
- Awareness of ascending controversies on

Who should attend?

- Emergency Physicians
- Critical Care Physicians
- Hospitalists
- Specialty Physicians
- Physician Assistants
- Nurse Practitioners, Nurses
- EMTs, paramedics, and others

Register [cmeportal](#)

HARVARD
MEDICAL SCHOOL



**NEUROLOGICAL
EMERGENCIES**

LIVE
STREAM

OCT 22 – 24, 2025 • LIVE STREAMING

- STROKE
- TBI
- SCC
- DIZZINESS
- RCVS
- CVST
- SEIZURES
- COMA
- CAUDA EQUINA
- CEREBRAL ANEURYSM



Department of Emergency Medicine

Education Highlights

International Projects

Our long-term partners, Region Sjælland in Denmark return to Boston for 2 programs this Fall — a 2-week Emergency Medicine Resident experience program and a 1-week program on building a regional emergency nurse research infrastructure.

Involved faculty include:

Amanda Doodlesack, Nicole Dubosh, Bryan Stenson, Jenn Kaminsky, Jesse Schafer, Carrie Tibbles, Christie Fritz, Austin Adams, and Rich Wolfe. Our residents added a lot to the experience – thanks to those who participated including Jake Adelman, Cam Johnson, Praneet Kang, Robert Petcu, Gerard Martusciello, Andy Kim, and Tyler Harder.



Department of Emergency Medicine

Education Highlights



Emergency Medicine CME 2026

Hilton Dublin Charlemont Place, Dublin, Ireland
27 April–1 May 2026



27–29 APRIL 2026



ED Quality Improvement Professional Certification

- Small group workshops
- Harvard faculty and other international experts
- Optional certification exam
- Root cause analysis
- Clinical pathways
- Case review
- Adverse event
- Error assessment

28–29 APRIL 2026



Fundamentals of Emergency Medicine Education

- Harvard faculty experts in medical education
- Small group workshops
- Adult learning theory
- Curriculum development
- Generational learning
- Effective feedback
- Psychological safety in learning
- Artificial intelligence
- Small group workshops
- Teaching in the clinical space

30 APRIL–1 MAY 2026



Neurological Emergencies

- World experts in neuro emergencies
- Small group workshops
- Case discussions
- Workshops on HINTS, BPPV, bedside ultrasound for neuro emergencies
- Brain imaging workshop
- Small group case discussions
- Stroke
- Headache
- Back pain
- ICH
- Seizures

EDQUALITYINSTITUTE.ORG

International Projects:

HMFP Department of
Emergency Medicine
heading to Dublin in
2026

Contact [Maile Blackburn](#) or
[Meaghan Cussen](#) for more
info.

Department of Emergency Medicine

Faculty Highlights



Reproductive Health Fellowship Selection

Congratulations to **Dr. Natalie Jansen**, who has been selected as a **2025–2026 Reproductive Health Fellow** through *Access Bridge*, a national organization dedicated to expanding access to reproductive health care within emergency departments. This highly competitive fellowship supports education, quality improvement initiatives, and systems-level innovation to strengthen reproductive health access for patients in the ED setting.

Department of Emergency Medicine

Recent Notable Publications

Al Mulhim MA, Eissa F, Voskanyan A, Hertelendy A, Ciottone G. The 2034 FIFA World Cup in Saudi Arabia: A Catalyst for Global Health Innovation and Emergency Preparedness. *Cureus*. 2025 Aug 21;17(8):e90651. doi:10.7759/cureus.90651.

<https://www.cureus.com/articles/398186-the-2034-fifa-world-cup-in-saudi-arabia-a-catalyst-for-global-health-innovation-and-emergency-preparedness>

Arastehmanesh D, Stenson BA, Grossestreuer AV, Balaji L, Antkowiak PS, Sanchez LD, Chiu DT. Waiting on the Urine: The Impact of Delayed Urine Collection on Length of Stay in the Emergency Department. *J Am Coll Emerg Physicians Open*. 2025 Aug 12;6(5):100236. doi:10.1016/j.acepjo.2025.100236.

<https://pubmed.ncbi.nlm.nih.gov/40837439/>

Burlotos A, Stenson BA, Grossestreuer AV, Dresser C. Weather information improves a predictive model of emergency department arrivals. *Intern Emerg Med*. 2025. doi:10.1007/s11739-025-04062-7.

<https://link.springer.com/article/10.1007/s11739-025-04062-7>

Fritz CL, Schoenfeld DW, Bivens MJ, Dunn K, Stocking JC, Zernicke L, Thomas CE, Racht E, Rosen CL, Thomas SH. Flight-Crew Administration Speeds Time to Tranexamic Acid: FAST TXA Study. *Air Med J*. 2025 Sep-Oct;44(5):379-385. doi:10.1016/j.amj.2025.06.001.

<https://www.sciencedirect.com/science/article/abs/pii/S073646792500174X>

Fritz CL, Thomas CE, Skaggs M, Zernicke L, McCartin MP, Blumen IJ, Price J, Hibberd O, Schoenfeld DW, Thomas SH. Recent Outcomes Research in Helicopter Emergency Medical Services: A Scoping Review of Publication-Year 2024 Additions to the Helicopter Outcomes Assessment Research Database. *Air Med J*. 2025 Jul-Aug;44(4):306-313. doi:10.1016/j.amj.2025.04.005.

<https://www.sciencedirect.com/science/article/pii/S2688115225001948>

Department of Emergency Medicine

Recent Notable Publications

Huebinger R, Habrat D, Fritz CL, Harrell AJ, Barrett WJ. Association of ketamine administration with intubation and cardiac arrest for prehospital patients with behavioral and substance-related complaints in the US. *Am J Emerg Med*. 2025 Apr;90:250-251. doi:10.1016/j.ajem.2025.01.047. <https://www.sciencedirect.com/science/article/pii/S0735675725000907>

Jansen NA, Fritz C. An Unexpected Cause of Shock in a Trauma Patient with Hemodynamic Instability and Large Volume Intra-Abdominal Free Fluid. *Clin Pract Cases Emerg Med*. 2025. <https://escholarship.org/uc/item/2q98n7vr>

Lommen M, Barten DG, Heuvelings K, De Cauwer HG, van Osch F, Tin D, Ciottone G. Terrorist Attacks Against Health Care Facilities, Health Care Workers, and First Responders: A Scoping Review. *Prehosp Disaster Med*. 2025 Aug;40(4):224-231. doi:10.1017/S1049023X25101313. <https://doi.org/10.1017/S1049023X25101313>

McCartin MP, Wool GD, Thomas SA, Panfil M, Schoenfeld D, Blumen IJ, Tataris KL, Thomas SH. Management Considerations for Air Medical Transport Programs Transfusing RhD-Positive Red Blood Cell-Containing Products to Females of Childbearing Potential. *Air Med J*. 2024 Jul-Aug;43(4):348-356. doi:10.1016/j.amj.2024.03.012. <https://www.sciencedirect.com/science/article/pii/S1067991X2400063X>

Moore EA, Schoenfeld DW, Fritz CL, Bivens MJ, Liu SW, Thomas SH. Geriatric “lift-assist” EMS calls with transport refusal: Characteristics of short-term repeat calls and hospitalizations. *Am J Emerg Med*. 2025 Sep;95:77-82. doi:10.1016/j.ajem.2025.05.041. <https://www.sciencedirect.com/science/article/pii/S0735675725003419>

Department of Emergency Medicine

Recent Notable Publications

Ranse J, Gray L, Mortelmans L, Sultana N, Achour N, Barten DG, Carlström E, Ciottone G, De Cauwer H, Goniewicz K, Granholm F, Hertelendy AJ, Kupietz K, Ratnayake A, Robinson Y, Somville F, Tin D, Khorram-Manesh A. Spontaneous and Unplanned Mass Gathering Events: A Scoping Review of Health Considerations for Riots, Civil Unrest, and Protest. *Disaster Med Public Health Prep*. 2025 Sep 22;19:e269. doi:10.1017/dmp.2025.10189.

<https://doi.org/10.1017/dmp.2025.10189>

Rosen CL, Thomas SA, McCartin MP, O'Brien KL, Blumen IJ, Dunn K, Judge T, Choate MM, Russ SE, Goodloe J, Bailey A, Norman JF, Bäckström D, Cohen J, Donohue M, Fritz CL, Schoenfeld DW, Thomas SH. Characteristics, Regional Evaluation, and D-Antigen in Transfusions by Emergency Medical Services. *JAMA Netw Open*. 2025 Jul 1;8(7):e2524368. doi:10.1001/jamanetworkopen.2025.24368.

<https://jamanetwork.com/journals/jamanetworkopen/fullarticle/2814220>