

Department of Pathology

Welcome New Hires

Emily Rosenzweig, MD



Emily graduated from the University of Vermont College of Medicine and completed a pathology student fellowship, **AP training and GYN fellowship at Stanford Health Care**. She stayed on at Stanford for a year as a clinical instructor, then re-entered the match and spent a year in Fresno, California as an intern in OB/GYN at UCSF-Fresno. She delivered many babies and loved OB/GYN, but after having her own baby, she made the decision to transition back to pathology and to move to Boston to be closer to family. She lives in Jamaica Plain with her husband Andrew and their 6-month-old, Homer. Emily is passionate about obstetric pathology and education and is excited to be back in New England.

Department of Pathology

Laboratory Updates

Critical Chromosome Breakage Testing Now Available at BIDMC Pathology Department

The Pathology Department Cytogenetics Laboratory has brought in-house the ability to provide critical chromosome breakage testing for Fanconi Anemia (FA), previously established at Dana-Farber Cancer Institute and Children's Hospital. In June, the lab tested a sample from its first patient. "The introduction of this gold standard diagnostic test for Fanconi anemia in department of pathology, represents a critical advancement in our ability to diagnose this rare devastating disease," said Sean Xu, MD, PhD, director of Molecular Hematopathology. "The initiative reflects a strong collaboration between BIDMC and Dana-Farber Cancer Institute—working together to bring cutting-edge tools directly to patient care. For the hospital, it not only enhances our clinical capabilities but also helps us retain patients by offering a seamless, end-to-end cancer care experience within our system."

The Pathology Department is one of the few laboratories in the country to have this expertise in diagnosing the disease. The lab includes testing, diagnostics, evaluation, and collected data. Often affecting children and teens, FA is characterized by multiple physical abnormalities, bone marrow failure, and a higher risk of cancer. Normally proteins produced by genes form a kind of cellular "machine" that helps detect and repair damaged DNA in blood stem cells (in bone marrow) and other cells in the body. In FA, DNA repair is slowed, and blood stem cells accumulate damaged DNA and do not survive.

Department of Pathology

Laboratory Updates

Critical Chromosome Breakage Testing (cont.)

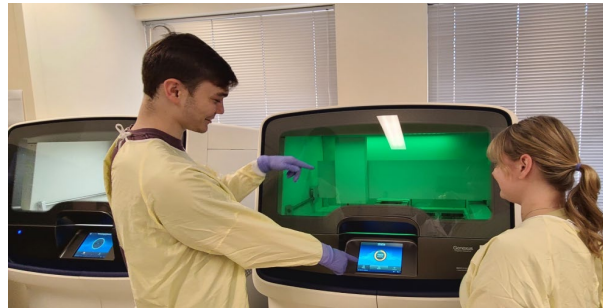
In addition to testing, the BIDMC FA reference center will also provide both diagnostic and consultative services for new and known patients with FA. Although the test is provided for pediatric patients, the BIDMC Cancer Center will be able to provide extraordinary care and the best therapies to these patients throughout their adult life, including first diagnosis, post treatment, and post transplantation.

Transitioning the FA lab to BIDMC is just one of many testing expansions the Pathology Department has implemented in the past year. “We are continuing to build our Precision Diagnostics program,” said Pathology Department Chair Michael H.A. Roehrl, MD, PhD, MBA. “Every several months we are bringing online new next generation sequencing testing, helping our patients get diagnosed more quickly so they can start treatment sooner.” For more information about the FA lab, contact [Annie Cheng](#) or go to the [BIDMC Clinical Pathology Cytogenetics page](#).

Department of Pathology

Laboratory Updates

First Next Generation Sequencing Clinical Assay Launched at BIDMC Pathology



Group photo, l-r: Atsushi Tanaka, MD, PhD, pathologist; Darion Tilton, MLS; Megan Pitts, MLS; Tom Moutinho, PhD, Genomic Bioinformatician; Annie Cheng, BSC, ASCP (M, SV), Clinical Manager; Eleanor Kelly, MLS; Samuel Smith, MLS; and Divya Bhagirath, PhD, Lead Genomic Scientist.

As part of the Precision Diagnostics Initiative at the Department of Pathology at BIDMC, spearheaded by the Chair of the Department, Michael H.A. Roehrl, MD, PhD, MBA, the Molecular Pathology Laboratory has developed a Next Generation Sequencing assay designed for rapid and comprehensive analysis of key mutations associated with myeloid malignancies. The Ultra-Fast NGS Myeloid Panel was launched on July 7, 2025, and is already serving the needs of patients of the BIDMC Blood Cancer Program. Leveraging streamlined workflows and optimized bioinformatics pipelines, this assay delivers high-quality results with significantly reduced turnaround time—typically within 3-4 days. It provides critical diagnostic, prognostic, and therapeutic information to support timely clinical decision-making in hematologic oncology. The assay is designed for sensitive detection of myeloid disorder-associated DNA mutations and RNA fusion transcripts in blood and bone marrow samples.

Department of Pathology

Laboratory Updates

First Next Generation Sequencing Clinical Assay Launched at BIDMC Pathology (cont.)

This is the first of a series of NGS-based assays to support cancer care at BIDMC. A complete genomic profiling assay, comprised of a large DNA panel and an RNA fusion panel is also under development and is expected to go live at the end of the year. The laboratory has also developed a set of ultra-fast single-gene assays with a laboratory turnaround time of < 24 hours for common mutations in the *EGFR*, *KRAS*, *BRAF*, and *NRAS* genes in solid tumors. Additional ultra-fast assays include an RNA fusion test for solid tumors, *IDH1/IDH2* gliomas, and *POLE/POLD1* in endometrial cancer. These advancements are supported by the expert faculty at Pathology as well as the clinical oncologist community at BIDMC.

Biomarker Assays

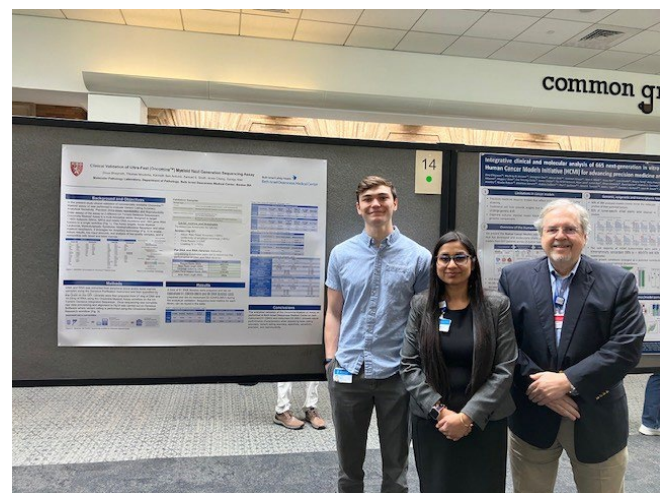
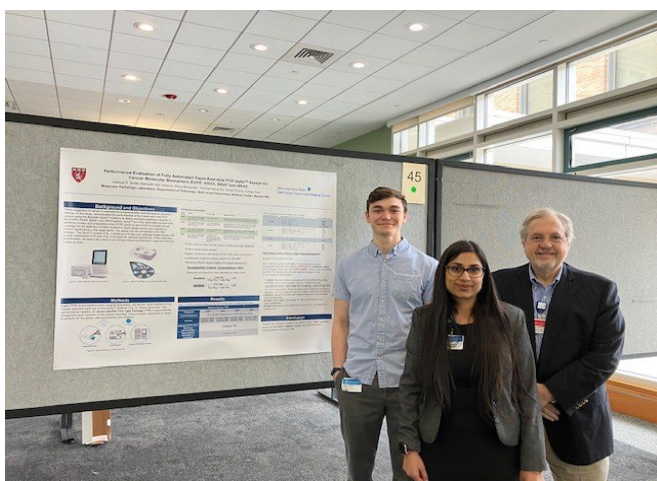
The immunohistochemistry laboratory has recently validated an **MDM2 in-situ hybridization assay**, enabling more rapid and precise detection of MDM2 gene amplification in challenging soft tissue tumors. In addition, our **FOLR1 immunohistochemistry assay** is now available, supporting targeted therapy selection in gynecologic malignancies. We are also nearing completion of validation for **Claudin-18**, a promising biomarker for gastric and gastroesophageal adenocarcinomas with implications for targeted treatments.

Department of Pathology

News

Harvard Medical School Pathology Research Retreat, May 2025

Congratulations to all the BIDMC pathologists who participated in the 2025 Harvard Medical School Pathology Research Retreat. **Winston Hide, PhD**, presented "Multi-Modal Interrogation of Molecular Mechanisms of Neuronal Resilience and Resistance in Alzheimer's Disease," and **Alex Toker, PhD**, presented "Targeting the PI3K/AKT Pathway in Cancer." The poster session included a dozen BIDMC Pathology submissions. Pictured below, l-r, **Samuel Smith; Divya Bhagirath, PhD; Gyorgy Abel, MD, PhD**, in front of their two posters: "Performance Evaluation of Fully Automated Rapid Real-Time PCR Idylla TM Assays for Cancer Molecular Biomarkers EGFR, KRAS, BRAF, and NRAS" and "Clinical Validation of the Ultra-Fact Oncomine TM Myeloid Next Generation Sequencing Assay."



Department of Pathology

Annual Monroe J. Schlesinger Lecture

Gordon J. Freeman, PhD, Discussed the B7 Gene Family: “A Goldmine of Therapeutic Agents”



Gordon J. Freeman, PhD, Professor of Medicine at Dana Farber Cancer Institute (DFCI) and Harvard Medical School (HMS) presented “B7 Family and Friends: Adventures in Tumor Immunology,” on June 5, as the Monroe J. Schlesinger Lecture, the highlight of the academic year for the BIDMC Department of Pathology. Dr. Freeman called the B7 gene family “a goldmine of therapeutic agents,” which he has been investigating and mining for 38 years. He has been using them to find the optimal T cell expansion for immunotherapy. His work contributes to the groundbreaking approach to cancer treatment that leverages the body’s own immune system to fight cancer cells.

Department of Pathology

Schlesinger Lecture (cont.)

The annual lecture is named for Monroe J. Schlesinger, MD who was a distinguished pathologist and the first Chair of the Department of Pathology at Beth Israel Hospital in 1928. Current Pathology Department Chair Michael H.A. Roehrl, MD, PhD, MBA, said of Dr. Schlesinger, “He epitomized the ideals and importance of the investigator physician-scientist.” He added that “named lectures connect us to our past and honor our leaders, past and present.”

Dr. Freeman discussed his research identifying the major pathways that control the immune response by inhibiting or stimulating T cell activation. He has shown that the PD-L1 molecule in the B7 family is highly expressed on many solid tumors, such as breast and lung, as well as some hematologic malignancies. This work provides critical translational insights for developing a successful strategy for cancer immunotherapy. Much of his work targeting molecules for different kinds of cancer is in clinical trials. More recently, he has been investigating how gut bacteria can also be recruited to enhance anti-tumor immunotherapy in mice and people.

He has been an active collaborator with many researchers at BIDMC, including **Rupal Bhatt, MD, PhD**, Hematology/Oncology; **Wenyi Wei, PhD**, Pathology; **David Avigan, MD**, director of the BIDMC Cancer Center; and **David McDermott, MD**, co-director of the BIDMC Immunotherapy institute.

He was hopeful that the new collaboration between DFCI and BIDMC will make more cellular and T cell therapies possible for our patients and ended the lecture with a photo of Barry Nelson who received immunotherapy 12 years ago for what was at that time considered an incurable lung cancer. He is healthy today and an advocate for immunotherapy.

Department of Pathology

Schlesinger Lecture (cont.)

“Dr. Freeman’s seminal work in immunology and T cell regulation has paved the way for modern immunotherapy of cancers and other diseases. His laboratory’s work shows how important basic science is for advancing cures for patients, which is also a paradigm for the central role of the medical specialty of Pathology,” said Dr. Roehrl.

Dr. Freeman has published more than 400 papers, three of which have been cited more than 5,000 times, and he is an inventor holding over 98 patents on immunotherapies. He earned his BA in biochemistry and molecular biology, and a PhD in microbiology and molecular genetics from Harvard University. He was elected to the National Academy of Sciences and the National Academy of Inventors and has received numerous awards, including the William B. Coley Award for Distinguished Research in Tumor Immunology, the Warren Alpert Foundation Prize, and the Richard Smalley, MD, Memorial Award.

Department of Pathology

Awards, Honors, and New Roles



We are delighted to announce the appointment of **Vikram Deshpande, MD**, as **Vice Chair of Anatomic Pathology Faculty Development & Academic Affairs**.



We are delighted to announce the appointment of **Michiya Nishino, MD, PhD** as **Vice Chair of Anatomic Pathology Operations and Quality**.



We are delighted to announce the appointment of **Yaileen Guzmán-Arocho, MD**, as **Associate Program Director** for the **BIDMC Cytopathology Fellowship**. As a graduate of both our residency and cytopathology fellowship programs, Dr. Guzman-Arocho brings a deep understanding of our Cytopathology Division and training environment, as well as a strong commitment to education. We are excited to have her step into this new leadership role to help shape the next generation of cytopathologists.

Department of Pathology

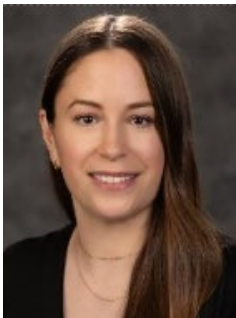
Awards, Honors, and New Roles



Steven Tahan, MD, was appointed **CLIA Director** of Needham Cancer Center Moh's Laboratory.



Matt Rosenbaum, MD, was appointed **Medical Director**, BIDMC Pathology Laboratory Information Systems



Liza Quintana, MD, was appointed **interim Director of Breast Pathology** and will join the Breast Care Executive Committee

Department of Pathology

Awards, Honors, and New Roles



Carmelo Nucera, MD, PhD, received notice that his DOD Impact Award entitled “**Targeting Specific IncRNAs in Novel Combined Therapies to Modulate the TSP1-Dependent Immune Microenvironment Vulnerabilities in Advanced Thyroid Cancer**” will be funded. In response to the Impact Award Program Announcement, the DOD received 315 pre-applications and invited 180 of these to submit a full application. The DOD received 148 compliant applications and recommended funding 12.



Hiro Inuzuka, Ph.D., has received a Notice of Award for his new NCI R01 entitled “**Targeting the SKP2 Axis for Anti-melanoma Therapy**”.



Through competitive application, **Osman Yilmaz, MD**, has been awarded the 2025 Eleanor and Miles Shore Award for project entitled: **Exploring Venous Invasion in Colorectal Cancer Through Spatial Transcriptomics: Molecular Signatures and Metastatic Pathways**.

Dr. Yilmaz was also selected to be a member of the Publications Committee for the USCAP (3-year term).

Department of Pathology

Publications

BIDMC Cancer Research Institute “Best Paper” Awards

- **Best Basic Science Paper - Antoine Karnoub, PhD**

Tu Z, Bassal MA, Bell GW, Zhang Y, Hu Y, Quintana LM, Gokul D, Tenen DG, Karnoub AE. [Tumor-suppressive activities for pogo transposable element derived with KRAB domain via ribosome biogenesis restriction](#). Mol Cell. 2024 Nov 7;84(21):4209-4223.e6. doi: 10.1016/j.molcel.2024.09.025. Epub 2024 Oct 30. PMID: 39481384.

- **Best Clinical Science Paper - Atsushi Tanaka, MD, PhD (Roehrl Lab)**

Tanaka A, Ogawa M, Zhou Y, Namba K, Hendrickson RC, Miele MM, Li Z, Klimstra DS, Buckley PG, Gulcher J, Wang JY, Roehrl MHA. [Proteogenomic characterization of primary colorectal cancer and metastatic progression identifies proteome-based subtypes and signatures](#). Cell Rep. 2024 Feb 27;43(2):113810. doi: 10.1016/j.celrep.2024.113810. Epub 2024 Feb 19. PMID: 38377004; PMCID: PMC11288375.

- **Best Collaborative Paper- Alex Toker, PhD**

Hillis AL, Martin TD, Manchester HE, Högström J, Zhang N, Lecky E, Kozlova N, Lee J, Persky NS, Root DE, Brown M, Cichowski K, Elledge SJ, Muranen T, Fruman DA, Barry ST, Clohessy JG, Madsen RR, Toker A. [Targeting Cholesterol Biosynthesis with Statins Synergizes with AKT Inhibitors in Triple-Negative Breast Cancer](#). Cancer Res. 2024 Oct 1;84(19):3250-3266. doi: 10.1158/0008-5472.CAN-24-0970. PMID: 39024548; PMCID: PMC11443248.

Department of Pathology

Publications

- Kelly RL, Liu Y, Harris AR, Peng C, Heng YJ, Baker GM, Stover DG, Tamimi RM, Kraft P. [The Breast Tumor Immune Microenvironment of DNA Double-Strand Break Repair Pathogenic Variant Carriers Is Enriched with Tumor-Associated Macrophages](#). *Cancer Epidemiol Biomarkers Prev*. 2025 Jun 3;34(6):868-874. doi: 10.1158/1055-9965.EPI-24-1692. PMID: 40172573.
- Peng C, Liu Y, Heng YJ, Bodelon C, Stover D, Chen WY, Holmes MD, Eliassen AH, Kraft P, Tamimi RM. [The impact of reproductive factors on breast tumor and normal-adjacent tissue immune profile from menarche to menopause](#). *Carcinogenesis*. 2025 Apr 3;46(2):bgaf028. doi: 10.1093/carcin/bgaf028. PMID: 40443130; PMCID: PMC12242764.
- Yaghjian L, Tamimi RM, Baker GM, Heng YJ. [Associations of stem cell markers with lobular involution in benign breast tissue](#). *Cancer Epidemiol Biomarkers Prev*. 2025 May 22. doi: 10.1158/1055-9965.EPI-25-0097. Epub ahead of print. PMID: 40402075.
- Yaghjian L, Heng YJ, Sardella BR, Murthy D, Mahoney MB, Rosner B, Polyak K, Ratcliff M, Tamimi RM. [Associations of circulating insulin-like growth factor-1 and insulin-like growth factor binding protein-3 with the expression of stem cell markers in benign breast tissue](#). *Breast Cancer Res*. 2025 Apr 7;27(1):53. doi: 10.1186/s13058-025-02002-z. PMID: 40197284; PMCID: PMC11978140.
- Otani Y, Maekawa M, Tanaka A, Peña T, Chin VD, Rogachevskaya A, Toyooka S, Roehrl MH, Fujimura A. [C1orf50 Drives Malignant Melanoma Progression Through the Regulation of Stemness](#). *Cancer Genomics Proteomics*. 2025 Jun 26;22(4):510-524. doi: 10.21873/cgp.20518. PMID: 40571314; PMCID: PMC12216575.
- Del Priore I, Toker A. [Lessons from the Oncology Clinic: Repurposing PI3K Pathway Inhibitors for the Treatment of PTEN Hamartoma Tumor Syndrome](#). *Cancer Discov*. 2025 Jul 3;15(7):1306-1308. doi: 10.1158/2159-8290.CD-25-0666. PMID: 40605508.
- Tamir TY, Chaudhary S, Li AX, Trojan SE, Flower CT, Vo P, Cui Y, Davis JC, Mukkamala R, Venditti FN, Hillis AL, Toker A, Vander Heiden MG, Spinelli JB, Kennedy NJ, Davis RJ, White FM. [Structural and systems characterization of phosphorylation on metabolic enzymes identifies sex-specific metabolic reprogramming in obesity](#). *Mol Cell*. 2025 Jun 5;85(11):2211-2229.e8. doi: 10.1016/j.molcel.2025.05.007. Epub 2025 May 28. PMID: 40441152; PMCID: PMC12147527.
- Navarro-Traxler AJ, Ghisolfi L, Lien EC, Toker A. [The glycosyltransferase ALG3 is an AKT substrate that regulates protein N-glycosylation](#). *bioRxiv* [Preprint]. 2025 Apr 3:2025.04.01.646556. doi: 10.1101/2025.04.01.646556. PMID: 40236010; PMCID: PMC11996567.
- Wang HH, Ono Y, Paulson TG, Grady WM, Odze RD. [Gastric \(Foveolar\) Dysplasia in Barrett's Esophagus: A Clinical, Molecular and Long-Term Outcome Study](#). *Am J Gastroenterol*. 2025 Mar 31. doi: 10.14309/ajg.0000000000003450. Epub ahead of print. PMID: 40162676.

Department of Pathology

Publications

- Portela GT, Ducrocq G, Bertolet M, Alexander JH, Goodman SG, Glynn S, Strom JB, Swanson SA, Lemesle G, Rao SV, Tessalee M, Polonsky TS, Goldfarb M, Traverse JH, Uhl L, Herbert BM, Silvain J, Carson JL, Brooks MM; [MINT Trial Investigators. Individualized transfusion decisions to minimize adverse cardiovascular outcomes in patients with acute myocardial infarction and anemia](#). Am Heart J. 2025 Apr;282:146-155. doi: 10.1016/j.ahj.2025.01.009. Epub 2025 Jan 17. PMID: 39826701.
- Tatake IJ, Wilkinson SC, Ruby KN, Collins JN, Dzik WH, Uhl L, Stowell S, Langer A, Makar RS, Carney BJ, Bendapudi PK. [Determinants and clinical impact of time to plasma exchange in patients with immune thrombotic thrombocytopenic purpura](#). Transfusion. 2025 Jul;65(7):1242-1250. doi: 10.1111/trf.18291. Epub 2025 May 26. PMID: 40418719.
- Qian C, Wang Z, Xiong Y, Zhang D, Zhong Y, Inuzuka H, Qi Y, Xie L, Chen X, Wei W, Jin J. [Harnessing the Deubiquitinase USP1 for Targeted Protein Stabilization](#). J Am Chem Soc. 2025 Apr 30;147(17):14564-14573. doi: 10.1021/jacs.5c01662. Epub 2025 Apr 19. PMID: 40252079; PMCID: PMC12077936.
- Wang Z, Qian C, Xiong Y, Zhang D, Inuzuka H, Zhong Y, Xie L, Chen X, Jin J, Wei W. [USP28-Based Deubiquitinase-Targeting Chimeras for Cancer Treatment](#). J Am Chem Soc. 2025 Apr 23;147(16):13754-13763. doi: 10.1021/jacs.5c01889. Epub 2025 Apr 11. PMID: 40214647; PMCID: PMC12105324.
- Shi J, He C, Chen L, Xing X, Wei W, Zhang J. [Targeting PD-1 post-translational modifications for improving cancer immunotherapy](#). Cell Insight. 2025 Apr 10;4(3):100248. doi: 10.1016/j.cellin.2025.100248. PMID: 40336591; PMCID: PMC12056969.
- Zhang D, Wang Z, Inuzuka H, Wei W. [Proximity-induced membrane protein degradation for cancer therapies](#). RSC Med Chem. 2025 May 2. doi: 10.1039/d5md00141b. Epub ahead of print. PMID: 40365034; PMCID: PMC12066958.
- Hou T, Yan P, Inuzuka H, Wei W. [Lysosomal EGFR functions as a GEF for Rheb](#). Cell Res. 2025 Jul;35(7):475-476. doi: 10.1038/s41422-025-01126-3. PMID: 40335660; PMCID: PMC12205051.
- Dutta S, Jacobs MR, Good CE, Abdelhamed AM, Ying YC, Hoyos-Urias A, Sugui DJ, Anaeto JU, Deak E, Valdez R, Rajan NK, Herget MS, Riedel S. [Multicenter evaluation of the eQUANT system for use with disk diffusion AST of gram-negative bacteria directly from positive blood cultures](#). J Clin Microbiol. 2025 Jun 11;63(6):e0160624. doi: 10.1128/jcm.01606-24. Epub 2025 May 9. PMID: 40340515; PMCID: PMC12153300.
- Panigrahy, D; Kelly, AG; Quinlivan, KM; Wang, W; Yang, J; Hwang, SH; Gillespie, M; Howard, IV; Bueno-Beti, C; Asimaki, A; et al. (2025) [Inhibition of Soluble Epoxide Hydrolase Reduces Inflammation and Myocardial Injury in Arrhythmogenic Cardiomyopathy](#). JACC-BASIC TO TRANSLATIONAL SCIENCE, 10 (3). pp. 367-380. ISSN 2452-302X <https://doi.org/10.1016/j.jacbts.2024.12.010>
SGUL Authors: [Asimaki, Angeliki](#)

Department of Pathology

Publications

- **Chen J, Daniels E, Mirsadraei L, Skala SL, Sun Y, Yilmaz O, Mehra R, Kopach P.** [Clinicopathologic Review of Malignancies in Neobladders and Conduits Following Bladder Reconstruction. Am J Surg Pathol.](#) 2025 May 27. doi: 10.1097/PAS.0000000000002429. Epub ahead of print. PMID: 40421535.
- **Mongiovi JM, Townsend MK, Vitonis AF, Harris HR, Doherty JA, Babic A, Hecht JL, Soong TR, Titus L, Conejo-Garcia JR, Fridley BL, Tworoger SS, Terry KL, Sasamoto N.** [Associations between Parity, History of Breastfeeding, and T-cell Profile of Ovarian Tumors.](#) Cancer Epidemiol Biomarkers Prev. 2025 Apr 3;34(4):550-559. doi: 10.1158/1055-9965.EPI-24-1414. PMID: 39912719; PMCID: PMC11968234.
- **Qian X, Coleman K, Jiang S, Kriz AJ, Marciano JH, Luo C, Cai C, Manam MD, Caglayan E, Lai A, Exposito-Alonso D, Otani A, Ghosh U, Shao DD, Andersen RE, Neil JE, Johnson R, LeFevre A, Hecht JL, Micali N, Sestan N, Rakic P, Miller MB, Sun L, Stringer C, Li M, Walsh CA.** [Spatial transcriptomics reveals human cortical layer and area specification.](#) Nature. 2025 May 14. doi: 10.1038/s41586-025-09010-1. Epub ahead of print. PMID: 40369074.
- **Oyelese Y, Litman E, Hecht JL, Hernandez-Andrade E, Kinzler WL.** [Hemorrhagic placental lesions on ultrasound: a continuum of placental abruption. J Perinat Med.](#) 2025 May 5;53(6):741-748. doi: 10.1515/jpm-2024-0564. PMID: 40312868.
- **Saxena T, Quan A, Chan E, Kozlova N, Matai L, Lee JD, Rupaimoole R, Beca F, Muranen T, Slack FJ.** [EGFR-induced lncRNA TRIDENT promotes drug resistance in non-small cell lung cancer via phospho-TRIM28-mediated DNA damage repair.](#) Proc Natl Acad Sci U S A. 2025 Mar 11;122(10):e2415389122. doi: 10.1073/pnas.2415389122. Epub 2025 Mar 3. PMID: 40030013; PMCID: PMC11912419.
- **Wang HH, Ono Y, Paulson TG, Grady WM, Odze RD.** [Gastric \(Foveolar\) Dysplasia in Barrett's Esophagus: A Clinical, Molecular and Long-Term Outcome Study.](#) Am J Gastroenterol. 2025 Mar 31. doi: 10.14309/ajg.0000000000003450. Epub ahead of print. PMID: 40162676.
- **Kim C, Liberman Y, Borisovsky G, Litmanovich D, VanderLaan P, Brook A, Brook OR.** [Incidence of malignancy in lung lesions initially classified as organizing pneumonia on CT-guided biopsies.](#) Abdom Radiol (NY). 2025 Jun 12. doi: 10.1007/s00261-025-05048-x. Epub ahead of print. PMID: 40504392.
- **Cheloni G, Karagkouni D, Pita-Juarez Y, Torres D, Kanata E, Liegel J, Avigan Z, Saldarriaga I, Chedid G, Rallis K, Miles B, Tiwari G, Kim J, Mattie M, Rosenblatt J, Vlachos IS, Avigan D.** [Durable response to CAR T is associated with elevated activation and clonotypic expansion of the cytotoxic native T cell repertoire.](#) Nat Commun. 2025 May 23;16(1):4819. doi: 10.1038/s41467-025-59904-x. PMID: 40410132; PMCID: PMC12102275.
- **Gauron MC, Prokopenko D, Lee S, Wolfe SA, Hecker J, Willett J, Waqas M, Lordén G, Yang Y, Mayfield JE, Castanho I, Mullin K, Morgan S, Hahn G, Demeo DL, Hide W, Bertram L, Lange C, Newton AC, Tanzi RE.** [A PKC \$\eta\$ missense mutation enhances Golgi-localized signaling and is associated with recessively inherited familial Alzheimer's disease.](#) Sci Signal. 2025 Jul;18(893):eadv0970. doi: 10.1126/scisignal.adv0970. Epub 2025 Jul 1. PMID: 40591711.