

Department of Emergency Medicine

Network Highlights



Wolfe Receives Lifetime Service Award



*Rich Wolfe, MD, FACEP, pictured here with
AACEM President, Jane H. Brice, MD, MPH*

Congratulations to Rich Wolfe, MD, FACEP, Chair of Emergency Medicine, who recently received the prestigious Association of Academic Chairs of Lifetime Service Award. This is one of the highest honors in academic emergency medicine, recognizing exceptional leadership, innovation, and lasting contributions to the field.

The award highlights Wolfe's impact on education, research, and policy and our broader BIDMC and HMFP community's leadership in shaping the future of emergency medicine.

Congratulations Dr. Wolfe! Full excerpt from the AACEM program on the following page.

AACEM Awards

LIFETIME SERVICE AWARD

RICHARD EVERARD WOLFE, MD, FACEP



Dr. Wolfe is an internationally recognized leader in emergency medicine, known for his pioneering work in emergency ultrasound, residency training, and the study of error in medicine. Since 1999, Dr. Wolfe has served as the Chief of Emergency Medicine at Beth Israel Deaconess Medical Center (BIDMC), where he has played a crucial role in advancing emergency department operations, quality improvement, and physician training.

Dr. Wolfe began his medical education at the Faculté de Médecine Necker-Enfants in Paris, France, earning his MD in 1984. He completed his emergency medicine residency at Denver General Hospital, where he later served as Associate Residency Director and Residency Program Director. In 1994, he moved to Boston to lead the Harvard Affiliated Emergency Medicine Residency at Brigham and

Women's Hospital and Massachusetts General Hospital. His leadership was instrumental in developing and formalizing Harvard's emergency medicine training, shaping two of the most prestigious residency programs in the country.

A pioneer in emergency ultrasound, Dr. Wolfe helped define its role in clinical practice, building on early work at Denver General. His research on ultrasound for trauma assessment and critical care applications was foundational to its widespread adoption in emergency medicine. He has lectured extensively on the topic, training generations of emergency physicians in point-of-care ultrasound techniques.

As an educator, Dr. Wolfe has been deeply engaged in teaching, both nationally and internationally. He has chaired the American College of Emergency Physicians (ACEP) Program Committee, shaping the national emergency medicine curriculum. In 2011, he was honored with ACEP's prestigious John Mills Lecture, recognizing his contributions to the field.

More recently, Dr. Wolfe has focused on defining and measuring error in medicine, working to develop objective tools for performance improvement in emergency departments. His publications and research in this area have contributed to a more structured approach to identifying and mitigating errors, ultimately improving patient safety.

His work with the Society for Academic Emergency Medicine (SAEM) and the Association of Academic Chairs in Emergency Medicine (AACEM) has addressed critical issues such as emergency department crowding, physician burnout, and healthcare system inefficiencies. He has been a vocal advocate for policy changes and operational reforms to enhance emergency care delivery.

Dr. Wolfe's career has been marked by a relentless commitment to innovation, education, and improving emergency medicine practice. Through his leadership, research, and advocacy, he has shaped the specialty and trained many of its current and future leaders.

Department of Emergency Medicine

Network Highlights

BID Milton Breaks Ground on Emergency Department Expansion



BID Milton recently celebrated the groundbreaking of its much-anticipated Emergency Department expansion—a major milestone in the hospital's ongoing efforts to meet growing community needs. The project will more than double the size of the current ED, enhancing patient flow, comfort, and access to care. Construction is officially underway, with teams energized by the progress and looking forward to the expanded space transforming emergency care delivery on the South Shore.

Looking Ahead: 2025 EM Attending Network Retreat

Emergency
Medicine Network
RETREAT

Education
Team building
Networking
Fun

JOIN US
Sept. 15-16, 2025
Ocean Edge Resort
Brewster, Massachusetts

RETREAT REGISTRATION & INFO
hmfemergency.org/retreat25

Reserve your hotel room
for the retreat today!

TO BOOK
CALL 1-508-896-9000
request HMFP room block **or**
VISIT hmfemergency.org/retreat25
for booking link

An application has been made for CME credits.

We're excited to share that the Department of Emergency Medicine will be hosting its bi-annual Attending Network Retreat on September 15–16, 2025, on Cape Cod. This special event brings together EM attendings from across our network for two days of connection, collaboration, and professional development.

Planning is already in motion, and the energy is high as we work to create a thoughtful and inspiring agenda. Stay tuned for more updates—we're looking forward to another memorable retreat!

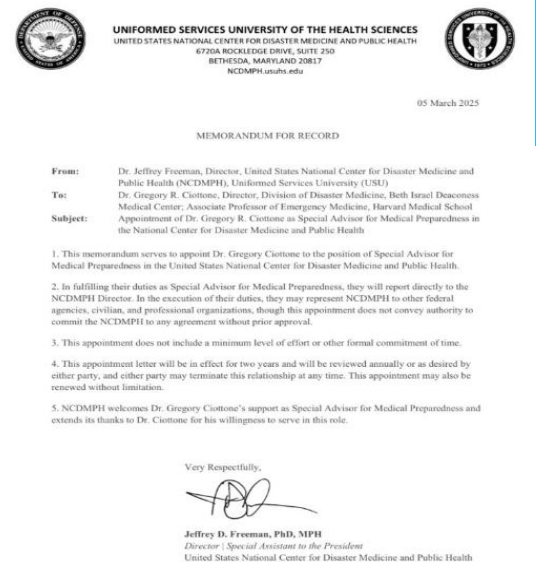
Department of Emergency Medicine

Network Highlights

Ciottone Tapped for a National Position

Greg Ciottone, MD, FACEP, FIBODM has been appointed **Special Advisor for Medical Preparedness at the National Center for Disaster Medicine and Public Health (NCDMPH)** by the Director and Special Assistant to the President.

There's never been a more important time for disaster readiness. We are thrilled for Dr. Ciottone and are confident he will be a tremendous influence on our nation's preparedness and recovery response in the event of disaster.



BIDMC Faculty Lead Climate Resiliency Training in Phoenix



We're proud to share that Dr. Tess Wiskel and Dr. Satchit Balsari recently led a high-impact climate resiliency simulation in Phoenix, AZ—one of the hottest cities in the U.S.—as part of Harvard's CrisisReady initiative. The exercise brought together city officials from public health, public works, police, and homeless services to plan for an escalating heat emergency.

Dr. Wiskel shared her expertise on the health effects of extreme heat, while Dr. Balsari helped guide critical interagency planning focused on protecting vulnerable populations.

This work is a standout example of BIDMC's leadership in climate and disaster preparedness. Congratulations to Drs. Wiskel and Balsari for advancing this important mission on a national stage!

Department of Emergency Medicine

Network Highlights

Highlighting Dr. Satchit Balsari's Leadership in Climate Resilience



Satchit Balsari

Associate Professor in Emergency Medicine, Harvard Medical School

We are proud to announce that Dr. Satchit Balsari, Associate Professor of Emergency Medicine at Harvard Medical School and in Global Health and Population at the Harvard T.H. Chan School of Public Health, recently chaired the Scientific Committee for the "India 2047: Building a Climate-Resilient Future" symposium. This event convened experts across various disciplines to address the pressing challenges of climate change in India. Dr. Balsari's leadership exemplifies our commitment to interdisciplinary collaboration and global impact in tackling critical issues.

Learn more about the event [here](#).

Learn more about the institute here: [The Salata Institute for Climate and Sustainability](#).



Dr. Matt Bivens was named Community Clinician of the Year by the Mass Medical Society (Bristol South District).

Department of Emergency Medicine

Network Highlights

Department Shines at the NAEMSP 2025 Conference in San Diego



Department of Emergency Medicine

Network Highlights

Recognition for Excellence in Medical Student Teaching

Congratulations to Dr. Vivian Burton and Dr. Bryan Stenson, who were recently recognized by the Harvard Medical School Office of Medical Education for their contributions to the BRIDGES I (PWY210) and BRIDGES II (PWY211) courses. These case-based courses are a core part of the HMS pre-clinical curriculum, and this recognition reflects the impact of their teaching on our medical students' early clinical education.



We appreciate the time, effort, and expertise they've brought to this important work.

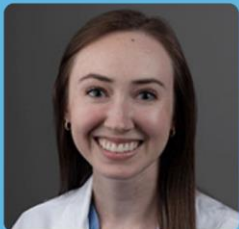


Members of our department gathered at the Women in Emergency Medicine event in March for an evening of good conversation, camaraderie, and inspiration.

Department of Emergency Medicine

Network Announcements

EMERGENCY
MEDICINE
CHIEF
RESIDENTS
2025-2026



DR. TIM DOWNS
DR. SEAN GIBNEY
DR. ANDY KIM
DR. SYDNEY
MULQUEEN

**Congrats to
our 2025-2026
Chief
Residents**

**Terrific
Match
Year!**

We found the right match.

Introducing the BIDMC-HAEMR Class of 2028



Jacob Adelman
George Washington



Ryan Cunningham
Brown



Christopher de la Bastide
Stony Brook



Aidan Fite
Tufts



Justin Goodwin
Yale



Kaylee Hausrath
University of Buffalo



Renee Joyce
Univ of Massachusetts



Praneet Kang
Rutgers



Nicholas Lewis
Univ South Florida



Gerard Martusciello
Rush



Sarah Olson
University of Texas -
McGovern



Ellen Pil
Johns Hopkins



Christopher Zammitti
Univ of
Massachusetts

Beth Israel Lahey Health
Beth Israel Deaconess Medical Center
HARVARD MEDICAL SCHOOL
TEACHING HOSPITAL

Beth Israel Deaconess
Medical Center



HARVARD MEDICAL SCHOOL
TEACHING HOSPITAL